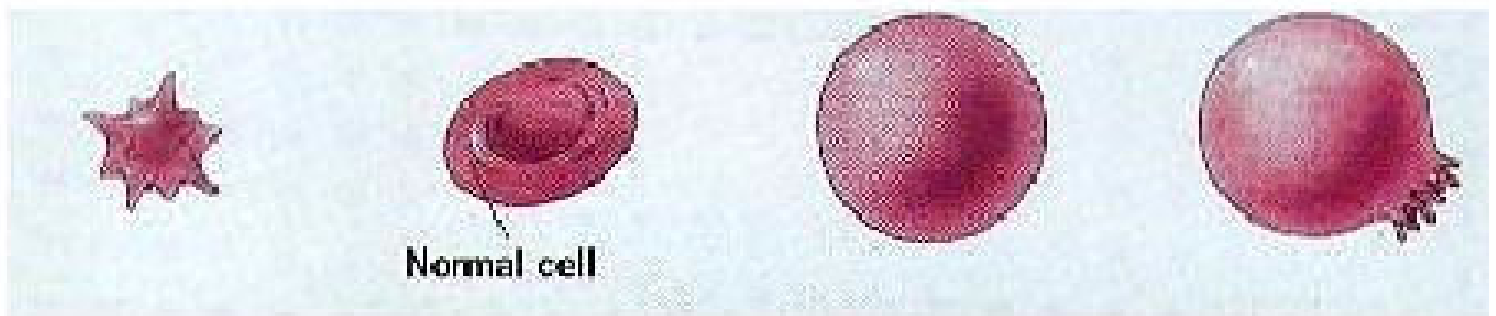
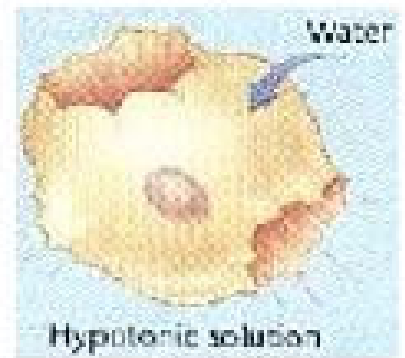
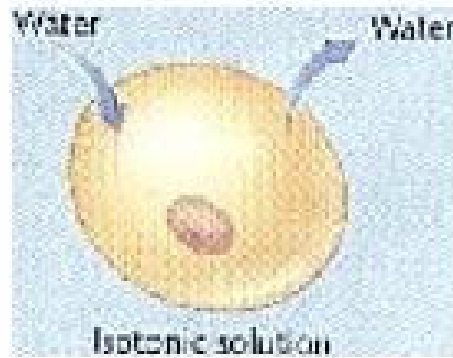


# OSMOTIC CONDITIONS AND EFFECTS



## Hypertonic

The concentration of solutes outside is higher than it is inside the cell.

## Isotonic

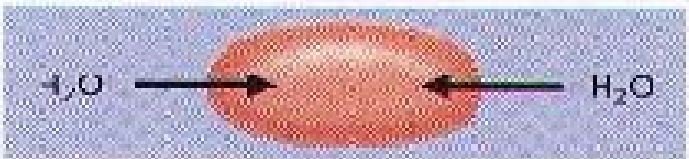
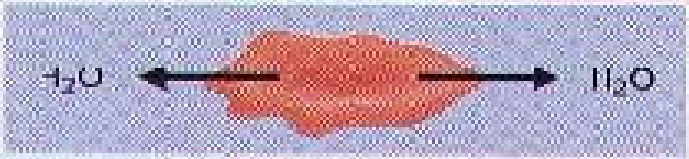
The concentration of solutes outside the cell is equal to that inside the cell.

## Hypotonic

The concentration of solutes outside is lower than it is inside the cell.

## Very Hypotonic

This cell has burst due to the large amount of water entering it.

Condition	Net movement of water	
External solution is hypotonic to cytosol	into the cell	
External solution is hypertonic to cytosol	out of the cell	
External solution is isotonic to cytosol	none	